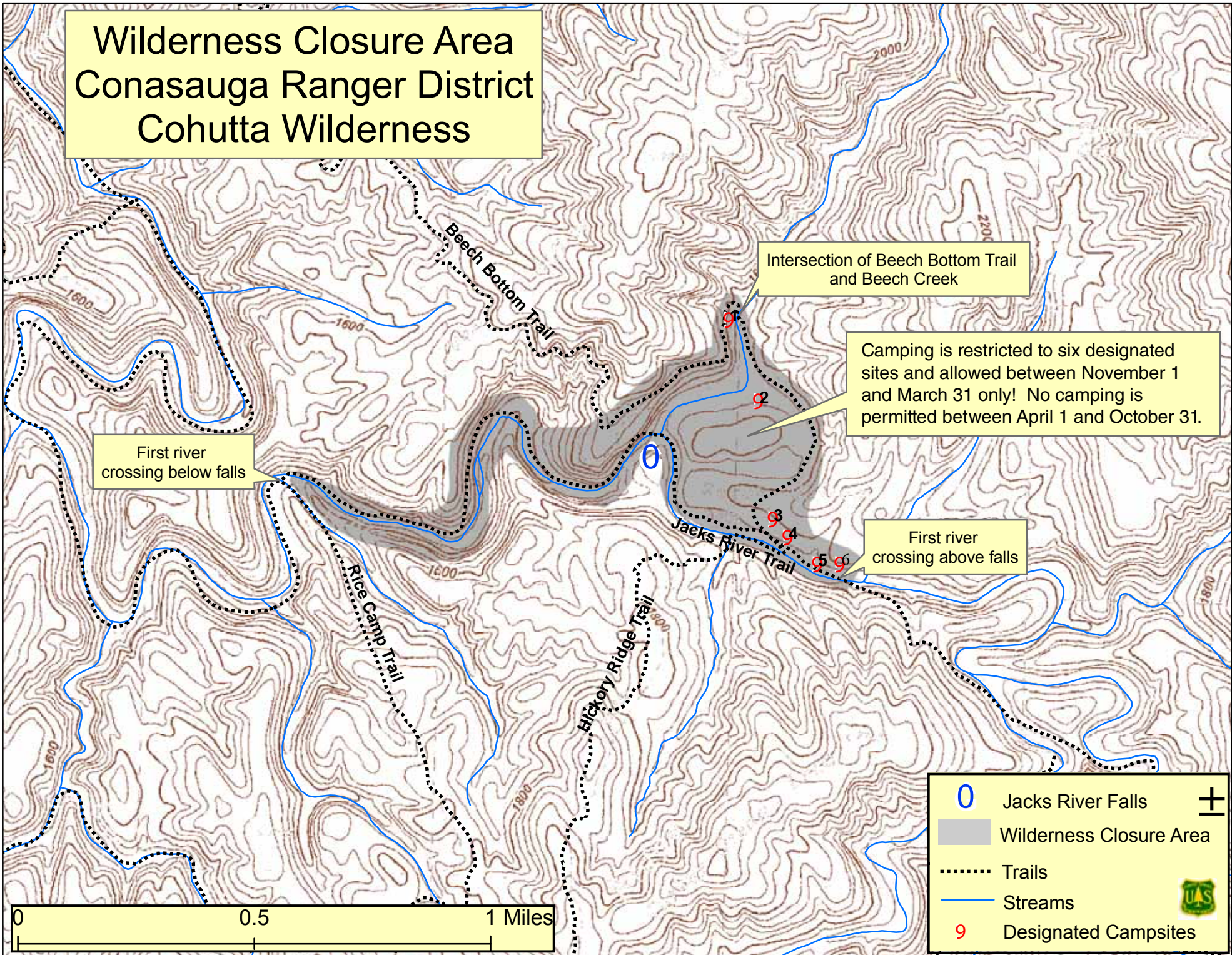


Wilderness Closure Area Conasauga Ranger District Cohutta Wilderness




Intersection of Beech Bottom Trail and Beech Creek

Camping is restricted to six designated sites and allowed between November 1 and March 31 only! No camping is permitted between April 1 and October 31.

First river crossing below falls

First river crossing above falls

- 0 Jacks River Falls
 - Wilderness Closure Area
 - Trails
 - Streams
 - 9 Designated Campsites
- 

0 0.5 1 Miles